

MemoCam™ DVR

ALL IN ONE DIGITAL CCTV RECORDER

Patent Pending

Smart Compact Digital Video Recorder with removable
Memory Card and - **Video Motion Detection**

Event
recording
has never been
so easy



A compact, palm-size CCTV System that records and stores events on a removable Memory Card.

- 3 Video inputs for CCTV cameras.
- 1 Video output for real time monitoring and camera adjustment.
- Video Motion Detection (VMD).
- Stores up to 10,000 B/W images on MultiMedia Card (64MB MMC).
- Weekly Scheduler.
- Ultimate image quality.
- Easy to install and user friendly.

**Absolute
Automation**

29454 Oakdale Rd.
Thamesville, ON
N0P 2K0

1-800-296-3910
www.absoluteautomation.com

3070 Palms Rd.
Casco, MI
48064



Security Industry Finest



WINNER

The MemoCam DVR is designed on the same innovative technology as the original MemoCam, twice award winner for excellence and innovation.

MemoCam™ DVR

Smart Compact Digital Video Recorder with removable Memory Card and - **Video Motion Detection**

The MemoCam DVR automatically records events on the Memory Card following an alarm. The alarm can be activated by external triggers and or by the internal VMD.

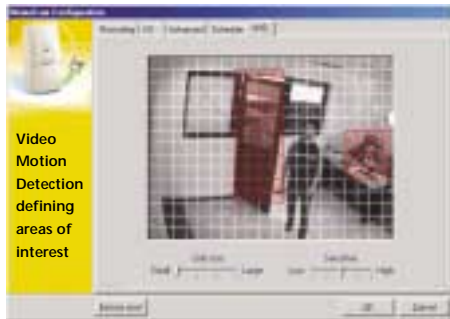
The MemoCam DVR can be easily integrated into existing CCTV system.

The VMD enables the user to define specific areas of interest within the picture frame.

The recorded events are easily analyzed by simply removing the Memory Card from the unit and inserting it into a Memory Card Reader connected to a PC.

The remote control unit enables the user to Arm/Disarm the event recording process or record events manually.

The Arm/Disarm function can be activated by external triggers.



BENEFITS

- The MemoCam DVR is a compact CCTV system that replaces the traditional VCR with external VMD.
- Adding 3 external cameras, converts the unit into a multiple camera CCTV system, significantly reducing the cost per video input.
- The Video Output enables the user to view live video from a selected camera when connected to a CCTV monitor. This feature simplifies the camera adjustment process and provides additional monitoring capability.
- The built-in weekly Scheduler enables the user to automatically Arm/Disarm the system at predefined times and days.
- Simple automatic setup on the Memory Card defines the: image quality mode, camera visual parameters, frame rate and number of frames per event.
- There are 2 recording modes:
Fixed - Records events until the Memory Card is full.
Cyclic - Records events successively, overriding old data when the Memory Card is full.
- Image Integrity - each image is digitally signed and can be authenticated.
- The 3 color-coded LEDs indicate the status of the unit.

POPULAR APPLICATIONS

Commercial - Event recording in retail stores, gasoline stations, parking lots, restaurants, museums, hotels, etc. for loss prevention, shoplifting confirmation, inventory control, sales transaction record, stock room access verification, attendance identity control, analyzing shopping habits. Event recording can also be added to existing video monitoring systems.

Mobile - Records events inside or outside vehicles. Anti-crime prevention in taxis and buses, verify driver identification, confirm what merchandise was unloaded from the truck/van. "Black box" application for accident analysis.

Home - "Nanny Watch" - activity record, home visitor and intruder control. Additional recording capability to Video-Door-Phones.

Offices - Entrance/Exit record, trespass verification in confidential locations, after-hours activity record.

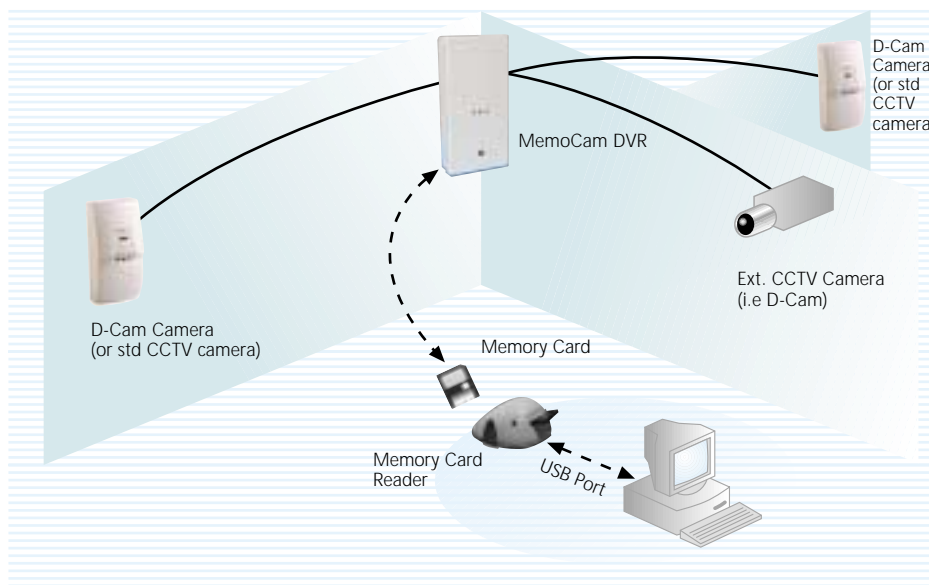
Banks - Monitor Safe box, ATM cash withdrawal verification, hold-up verification.

Hospitals - Monitor pharmaceutical supplies, stock room control, trespass verification in confidential locations.

Construction sites - Construction materials theft control.

Remember - criminals are camera shy!

SYSTEM DIAGRAM



TECHNICAL SPECIFICATIONS

Video Inputs	3 (for external cameras)
Video Output	1 (for adjustment & monitoring)
Dry contact Input	3 (for external triggers)
Relay Output	2
Internal VMD	Yes
Weekly Scheduler	Yes
Removable MMC type	8, 16 std, 32, 64 MB storage
Compression Format	JPEG
Recording Quality	Good, Great, Better, Best
Image Size	5-20 KB / image
Recording Rates	From 3 images/second to 1 image/5 minutes
No of images per event	1 to 101 images
Current Consumption	Typical -400mA @ 12 VDC
Unit Dimensions (mm)	67 x 135 x 56 (W x H x D)
Weight	250 g

Absolute Automation

29454 Oakdale Rd.
Thamesville, ON
N0P 2K0

1-800-296-3910
www.absoluteautomation.com

3070 Palms Rd.
Casco, MI
48064